

FSD32 TECHNICAL PARAMETERS

BULLDOZER SERIES

LOVOL

| ENGINE | SD32 | SD32C | SD32D | SD32R | SD32W |
|--------------------------------|------------------------|-------|-------|-------|-------|
| Engine | Cummins NTA855-C360S10 | | | | |
| Emission | China-I | | | | |
| Rated revolution | 2000rpm | | | | |
| Gross power | 257kW(350hp)@2000rpm | | | | |
| Net power | 235kW(320hp)@2000rpm | | | | |
| Number of cylinder-bore×stroke | 6-140X152mm | | | | |
| Displacement | 14.01L | | | | |
| Max. torque | 1509N.m@1400rpm | | | | |
| Cooling system | Mechanic fan | | | | |

| DRIVE SYSTEM | SD32 | SD32C | SD32D | SD32R | SD32W |
|---------------------------------|---|-----------------------------------|-------|-------|-------|
| Drive system | Manufactured by SHANTUI, with high working efficiency, low breakdown rate; torqflow transmission, 3 gears forward and 3 gears backward. | | | | |
| Traveling speed | Forward | F1:3.6km/h F2:6.6km/h F3:11.5km/h | | | |
| | Backward | R1:4.4km/h R2:7.8km/h R3:13.5km/h | | | |
| Max. theoretical traction force | 318.2kN | | | | |
| Torque converter | 3-element, single stage, 1-phase | | | | |
| Transmission | Planetary gear and torqflow transmission hydraulically actuated, forced lubrication | | | | |
| Central drive | Spiral bevel gear, single-stage speed reduction, splash lubrication | | | | |
| Steering clutch | Wet multiple disc, disc spring loaded, hydraulically actuated, hand operated, interconnected with steering brake. | | | | |
| Brake clutch | Wet, contracting band, foot operated with hydraulic booster | | | | |
| Final drive | Spur gear, double reduction, splash lubrication | | | | |

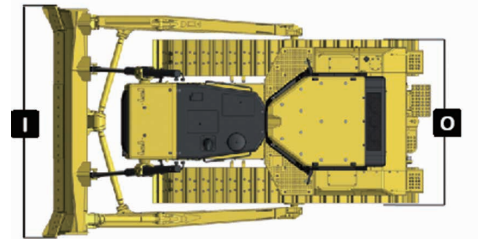
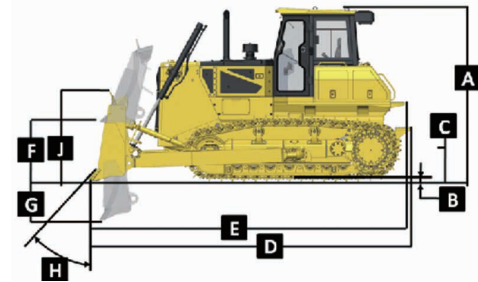
| CHASSIS SYSTEM | SD32 | SD32C | SD32D | SD32R | SD32W |
|---|--|---------|---------|---------|-----------------------|
| Type | Swing type of sprayed beam, suspended structure of equalizer bar | | | | |
| Track shoe type | Single grouser | | | | |
| Track gauge | 2140mm | | | | |
| Width of track shoe | 560/610/660/710mm | | | | 560mm (heavy duty) |
| Track grounding length | 3150mm | | | | |
| Track grounding area | 35280/38430/41580/44730cm ² | | | | 35280cm ² |
| Number of track shoe | 41 pcs/side | | | | |
| Grounding pressure (standard configuration) | 81.7kPa | 82.3kPa | 82.9kPa | 85.6kPa | 84.1kPa |
| Number of carrier roller | 2 pcs/side | | | | |
| Number of track roller | 7pcs/side | | | | |
| Pitch | 228.6mm | | | | |

| VOLUME | SD32 | SD32C | SD32D | SD32R | SD32W |
|-------------------------|----------|-------|-------|-------|-------|
| Fuel capacity | 640L | | | | |
| Coolant liquid capacity | 79L | | | | |
| Engine oil capacity | 45L | | | | |
| Hydraulic oil tank | 97L | | | | |
| Transmission | 185L | | | | |
| Final drive | 55L/side | | | | |

| OPERATING WEIGHT | SD32 | SD32C | SD32D | SD32R | SD32W |
|-----------------------------|---------|---------|---------|---------|---------|
| Operating weight (standard) | 34500kg | 34150kg | 34150kg | 35230kg | 35000kg |

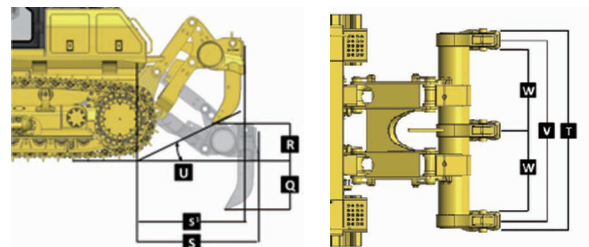
| BLADE | SD32 | SD32C | SD32D | SD32R | SD32W |
|----------------|------------------------------|--------|------------------------------|---------------------|------------------------------|
| Blade type | Straight-tilt /Angle/ Semi-U | Coal-U | Straight-tilt /Angle/ Semi-U | Waste handing blade | Straight-tilt /Angle/ Semi-U |
| Blade capacity | 7.2/4.8/9m ³ | 12.1 | 7.2/4.8/9m ³ | 18.3m ³ | 7.2/4.8/9m ³ |

| DIMENSION | SD32 | SD32C | SD32D | SD32R | SD32W |
|---|------------------|--------|------------------|--------|------------------|
| A Machine height (without ROPS) | 3760mm | | | | |
| B Track grouser height | 72mm | | | | |
| C Ground clearance | 500mm | | | | |
| D Machine length (without draw bar) | 6276mm | | | | |
| E Machine length (with draw bar) | 6610mm | | | | |
| F Max. lifting height of blade | 1560/1703/1560mm | 1560mm | 1560/1703/1560mm | 1560mm | 1560/1703/1560mm |
| G Max. digging depth of blade | 560/630/560mm | 560mm | 560/630/560mm | 560mm | 560/630/560mm |
| H Digging angle of blade | 55°±3°(deg.) | | | | |
| I Blade width | 4130/5000/4130mm | 4806mm | 4130/5000/4130mm | 4502mm | 4130/5000/4130mm |
| J Blade height | 1590/1140/1710mm | 1710mm | 1590/1140/1710mm | 2314mm | 1590/1140/1710mm |
| O Width from end of left track shoe to end of right track shoe (standard) | 2700mm | | | | |



PARAMETER OF RIPPER

| | Three-shank ripper | Single shank ripper |
|--|--------------------|---------------------|
| Type | Three-shank ripper | Single shank ripper |
| Weight | 4954kg | 4404kg |
| Q Max. ripping depth | 842mm | 1250mm |
| R Max. lifting height | 883mm | 955mm |
| S Ripper length (at deepest ripping) | 2467mm | 2855mm |
| T Ripper width | 2420mm | 1186mm |
| U Departure angle (at highest lifting) | 34.5° | 34.3° |
| V Ripping width | 2240mm | - |
| W Distance between ripper teeth | 1120mm | - |



FSD32

LOVOL

BULLDOZER SERIES

| | |
|------------------|------------------------|
| ENGINE MODEL | CUMMINS NTA855-C360S10 |
| GROSS POWER | 257KW(350HP)@2000rpm |
| OPERATING WEIGHT | 34500KG |

