

JCB LOADALL | 525-50M



FAST FACTS

JCB Military Loadall

- Compact machine designed to work where access and headroom are restricted including ISO containers
- Lifts 2,500kg to a height of 5.0 metres and 1,000kg to full forward reach
- Permanent 4 wheel drive and steering on 4 equal sized wheels for great traction and turning circle
- Military specific options enables correct specification machine for all applications



High Performance
by Design

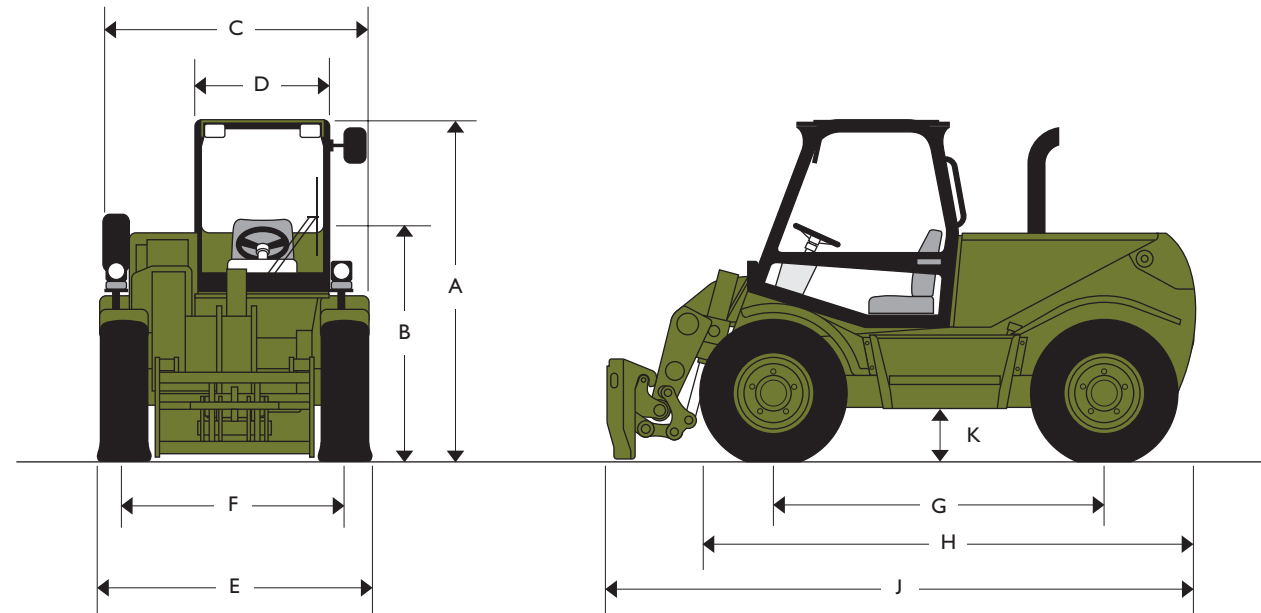




JCB LOADALL | 525-50 MILITARY



MAX. PAYLOAD: 2.5 tonnes (5510lb)
 MAX. LIFT HEIGHT: 5.0 metres (16ft-5in)
 MAX. HORSEPOWER: 57.5/74.6 kW (77/100hp)



STANDARD STATIC DIMENSIONS

Machine model	525-50M
	m (ft-in)
A Overall height (std cab)	2.19 (7-2)
B Height to top of steering wheel	1.57 (5-2)
C Overall width	1.82 (6-0)
D Inside width of cab	0.83 (2-9)
E Width over tyres	1.82 (6-0)
F Front track	1.49 (4-11)
G Wheelbase	2.00 (6-7)
H Overall length to front tyres	3.13 (10-3)

Machine model	525-50M
	m (ft-in)
J Overall length to front carriage	3.62 (11-10)
K Ground clearance	0.36 (1-2)
Outer turn radius over tyres	3.71 (12-1)
Obstruction/departure angle with/without quickhitch	30°/58°
Weight	kg (lb) 5400 (11904)
Power to weight ratio 57.5kW (77hp) Engine	9.8kW/tonne
Tyres – Michelin XM37	335 x 80 R18

STANDARD LIFT PERFORMANCE

Machine Model	525-50M
Lift capacity to full height	kg (lb) 2500 (5510)
Lift capacity at full reach	kg (lb) 1000 (2204)
Lift height	m (ft-in) 5.00 (16-5)
Reach at max lift height	m (ft-in) 0.50 (1-8)
Maximum forward reach	m (ft-in) 2.82 (9-3)
Reach with 1 tonne load	m (ft-in) 2.82 (9-3)
Placing height	m (ft-in) 4.60 (15-1)

Complies with stability test EN 1459 Annex B.

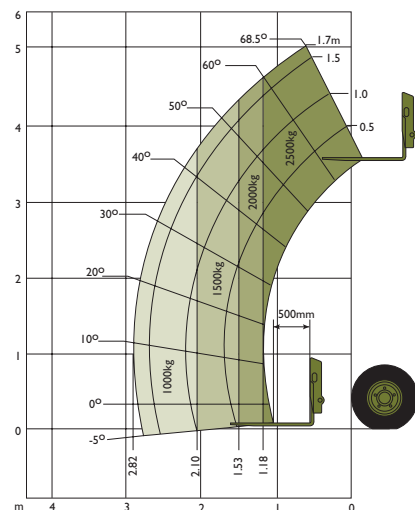


JCB LOADALL | 525-50 MILITARY

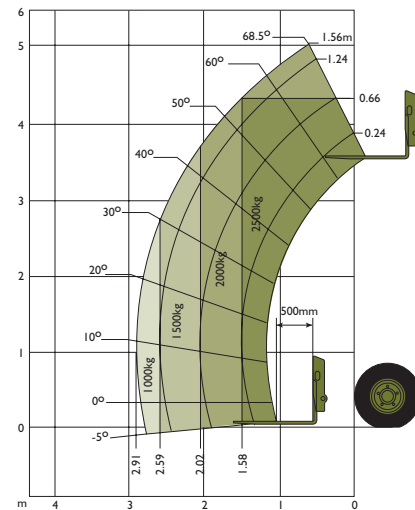


LIFT PERFORMANCE

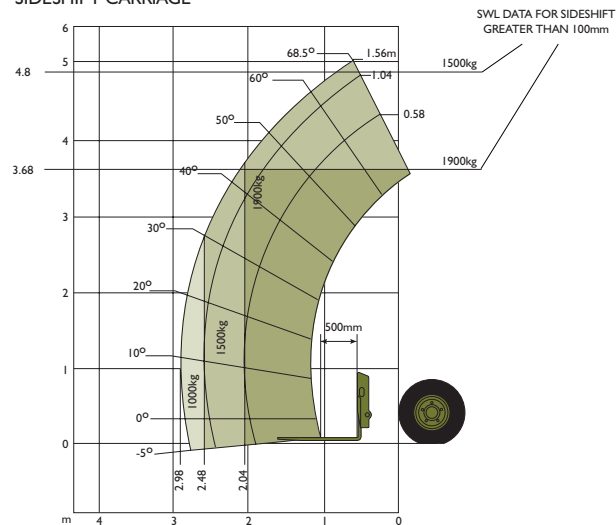
STANDARD CARRIAGE ONLY



FOR MACHINES FITTED WITH 200MM STROKE SIDESHIFT CARRIAGE



FOR MACHINES FITTED WITH 1200MM STROKE SIDESHIFT CARRIAGE



SWL DATA FOR SIDESHIFT LESS THAN 100mm

LOADER PERFORMANCE

Machine Model	525-50M	
	Standard GP bucket	
Bucket rated capacity	m ³ (yd ³)	0.90 (1.20)
Bucket struck capacity	m ³ (yd ³)	0.76 (1.02)
Breakout force	kgf (lbf)	2800 (6172)
Dump height (max)	m (ft-in)	4.46 (14-6)
Dump angle at max height	degrees	40°
Loadover height (max)	m (ft-in)	5.09 (16-8)
Rollback angle at ground	degrees	40°
Carriage rotation angle (total)	degrees	150°
Payload (max)	kg (lb)	1620 (3571)
Bucket width	m (ft-in)	1.95 (6-5)

ENGINE

Latest technology and advanced design provides low fuel consumption, reduced noise, high torque and power output, total reliability and minimal maintenance.

Easily replaceable pre-finished dry liners, five bearing, heat treated crankshaft. Expansion controlled pistons.

Two-stage, dry type air filter with primary and safety elements.

Engine conforms with EC mobile off-highway emissions regulations (stage 1).

Engine options	525-50M	
Displacement	ltr (in ³)	4.20 (256)
No. of cylinders		4
Bore size	mm (in)	103 (4.06)
Stroke	mm (in)	127 (5)
Aspiration	Naturally aspirated	
Power rating @ 2000rpm		
Gross SAE J1349	kW (HP)	57.5 (77)
Torque rating @ 1200rpm		
SAE J1349	Nm (lbf ft)	290 (214)
Noise level directive 2000/14/EC	dBA	104

TRANSMISSION

JCB Syncro Shuttle transmission incorporating torque converter, reversing shuttle and all synchromesh 4-speed gearbox in one resiliently mounted unit.

Electro-hydraulic direction control through a steering column mounted switch for modulated forward/reverse shuttling.

Gear lever and loader control transmission disconnect switches for fast gearchanging.

Travel speed 30km/h (18mph).

Front and rear axles: Epicyclic hub reduction type with drop box on front axle. 4WS and permanent 4WD.

SAFETY CHECK VALVES

Fitted to carriage tilt, telescopic and boom lift rams.

High Performance
by Design



JCB LOADALL | 525-50 MILITARY



BRAKES

Service brakes: Hydraulically activated, power assisted multi disc type brakes. They are oil immersed for long life and fade free braking. Mounted within the planetary hub means that the brakes are direct acting to each wheel, greatly increasing deceleration and eliminating skid potential.

Parking brake: Is an electro/hydraulically operated oil immersed multi disc brake on the transmission output shaft and will hold the machine on 1 in 4 gradients.

STEERING

Full power hydrostatic steering. Permanent 4WS with 32° lock front and rear axles provides exceptional manoeuvrability. 4WS is provided by a steer priority flow from the main hydraulic pump. Flow is directed through a steer alignment valve to double acting steer rams (1 per axle).

Steering option: Three steer mode options: front wheel steer; all wheel steer; crab steer; operated from in the cab by a selection switch, with automatic alignment.

SERVICE CAPACITIES

Fuel tank	litres (UK gal)	90 (9.5)
Hydraulic tank	litres (UK gal)	70 (15.5)
Coolant	litres (UK gal)	20 (4.4)

ELECTRICS

Option 1: 12 V negative earth. 103 AH heavy duty battery with isolator. 65 amp alternator. Full road lighting. Direction indicators. Hazard warning.

Option 2: 24 V negative earth. Twin 115 AH heavy duty battery. 55amp alternator. Full road lighting. Direction indicators. Hazard warning. Lockable battery isolator. Inter-vehicle start socket. heated side and rear screen.

TRANSPORTABILITY

Air transportable in C130, C141 and C-5. Can be slung beneath heavy lift helicopter. Recovery points front and rear. Lifting and tie down points.

ATTACHMENTS

Hydraulic or mechanical quickhitch tool carrier allows rapid change of front end attachments. Standard class 2 carriage. 200mm stroke or 1200mm stroke sideshift fork frame allows placement and recovery of loads from either side of an ISO container. 0.9m³ shovel for loose material handling. Standard carriage load guard.

HYDRAULICS

Single gear pump, with suction strainer and filter. One boom end auxiliary hydraulic service fitted as standard.

Operating system pressure	bar (psi)	241 (3500)
Flow at system pressure (@ 2200rpm)	ltr/min	65
Cycle times		seconds
Boom raise		7.4
Boom lower		5.3
Extend		5.7
Retract		3.2
Bucket dump		2.3
Bucket crowd		3.2

CAB

Quiet, safe and comfortable cab conforms to ROPS 86/295/EEC and FOPS 86/296/EEC Directives. Toughened glass all round. Tinted with laminated roof screen. Roof bars, front screen and roof screen wipers and heater/screen demister. Rear opening window with wash/wipe. Audio-visual warning system for coolant temperature, engine oil pressure, air-cleaner, battery charge, transmission oil temperature and pressure. Hourmeter and tachometer. Multi lever direct acting hydraulic control levers with joystick control of lift and crowd, gear lever, parkbrake. Throttle and brake pedals. Adjustable deluxe suspension seat with retractable seat belt.

Load moment indicator: Automatic eye level audio-visual load moment indicator warning system receiving a signal from a load sensor housed on the rear axle. This system continuously monitors the machine's forward stability and leaves the operator in control at all times.

BOOM AND CARRIAGE

Boom is manufactured from high tensile steel.

Low maintenance, hard wearing pads.

JCB tool carrier parallel lift carriage with pin locking accepts fork frame with integral pallet forks and a wide range of attachments.

OPTIONS AND ACCESSORIES

Options: Low cab, working lights, reversing light, reverse alarm, rotating flashing beacon, fire extinguisher, front screen guard, tinted glass, mechanical or hydraulic tow hitch for maximum gross weight of 5 tonnes. Complete with trailer light socket and trailer tip hydraulics, hydraulic pin locking for attachments, 2 boom end auxiliary services. Low ground pressure bearing tyres, spark arrester, catalyst, air conditioning, limited slip differential in front and rear axle.

Category 'C' protection, 4 tonne NATO tow pintle, jack box and 5 tonne jack, tool box, spare wheel carrier, gun net rack, rifle holder, cab mounted search lights, light guards, winterisation, lifting eyes.

